

# developing Sustainable Communities

## Aims of the task: Years 11 and 12

### CREATING BUSINESSES IN THE COMMUNITY

Aims of this task:

- To show that you can **articulate good and innovative ideas well**
- To show some understanding of **how businesses** should and do **contribute to the communities** in which they are sited
- To show you understand what **people need** in order to **live comfortably together** as **positive neighbours**
- To show you understand **how ecological considerations** may be addressed to **create a thriving and ecologically responsible business community**
- To show you can **work well** within a large **team** as well as in smaller groups to **achieve collective goals**

You will succeed if your group supports the best work from within the whole group.

**A senior management group (SMG) should be selected;** each member could take one of the roles on the role sheet. The SMG's task is to coordinate the whole group's plan for a range of businesses to provide a good economic base for the community. There must be consumer choice, services for the inhabitants of the town and employment for people with a wide range of skills, abilities and interests.

You should consider:

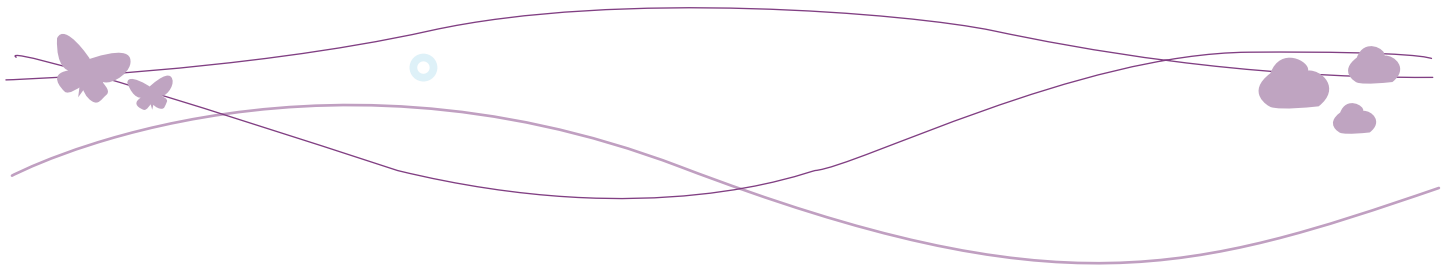
- **Where** different **businesses and retail outlets** should be **situated within a community** (at least in principle) to **ensure that community needs are met**
- Ways of **enhancing business operations**
- **Ensuring** the most **ecologically responsible commercial model possible**, minimising **negative impact** from the businesses on **local eco-systems**

Consider **renewable energy generation sources** to help towards supporting the direct daily needs of a **healthy community**. You should also pay attention to **local government structures** and **public services** which are a vital part of ordering and serving a town.

It is recommended that you **refer in-depth to the competition "resource pack" before and during the task** (where appropriate). A printed version of this resource pack has been sent to your Head Teacher, while additional soft copies can be downloaded from the competition website.

Information regarding the judging criteria that submissions will be reviewed against can be downloaded from the Judging tab of the competition website.





### Check lists

To achieve success you should demonstrate you have considered the following:

#### ✓ CRITERIA CHECK LIST

	<b>Innovative ideas</b> that may not exist in communities you know
	The <b>potential negative impacts of this community development on local eco-systems</b> and ways these impacts can be minimised or eliminated altogether
	Energy should be sourced from environmentally friendly and renewable sources; you could consider the <b>wind, solar, biomass</b> and <b>ground source energy generation</b> – or <b>any others you know of, or can discover</b>
	A lot of new building is occurring in low-lying land vulnerable to flooding - what sorts of measures could be taken to <b>help ensure</b> that the <b>inhabitants of your town do not suffer from this?</b>
	People require <b>recreational areas around or near homes</b> for playing, entertaining, building community 'feel' and generally 'hanging out'
	<b>Schools</b> and <b>other public services</b> for <b>all age groups</b> will be needed; what services, how many and where should they be sited in relation to housing?

**Your final submission must be in digital and hard copy format**  
(see Terms and Conditions for more information) **and could include:**

#### ✓ SUBMISSIONS CHECK LIST

	<b>Diagrammatic material</b> (e.g. tables, graphs, maps, diagrams)
	<b>Graphics</b> (original photographs or from printed or internet non-copyright sources)
	Written <b>text</b> documents
	<b>Digital photographs</b> of <b>3D models</b> you have constructed
	<b>Audio</b> or <b>video</b> clips
	<b>Appropriate presentational methods</b> not listed above

## ROLE SHEET FOR THE SENIOR MANAGEMENT GROUP

### Managing Director

---

Oversees the general operation of the whole group therefore needs to know what is happening in all areas of the group's work in general terms.

#### Main tasks:

- Provides encouragement for group members
- Assists wherever possible
- Ensures that deadlines are met
- Assists in settling difficulties between team members.

### Communications Manager

---

Responsible for group's access to ICT and providing relevant information.

#### Main tasks:

- Ensures that research materials are known about by all group members
- Ensures that appropriate communication between the sub groups takes place
- Assists all other group members
- Takes the lead in developing the electronic submission.

### Chief Architect

---

Responsible for the overall design.

#### Main tasks:

- Ensures that style and usefulness meet and match
- Ensures that the overall design meets the brief.

### Ecological Inspector

---

Responsible for low carbon footprint of the development.

#### Main tasks:

- Protects local animal and plant life
- Ensures all aspects of the group's plans are as eco-friendly as possible
- Undertakes relevant research and informs the rest of the group.

### Landscape Designer

---

Ensures design takes account of open spaces responsibly.

#### Main task:

- Ensures that the design incorporates open space to meet a variety of needs.

