

developing Sustainable Communities

Aims of the Task: Years 9 and 10

CREATING A PLACE TO LIVE

Aims of this task:

- To **develop new ideas**
- To show some understanding of **how ecological considerations** can be met while **creating modern, social and private accommodation** of all types
- To show that you can **articulate good and innovative ideas** well
- To show you understand what **types of housing** many **different sorts of people** need in order to live comfortably together as **positive neighbours**
- To show you can **work well** within a large **team** as well as in smaller groups to **achieve collective goals**.

You will succeed if your group supports the best work from everyone in the whole group.

A senior management group (SMG) should be selected; each member of it could take one of the roles on the role sheet. The SMG's task is to ensure that all categories of people have housing designs developed for them and that the whole team makes a well coordinated presentation.

The **main task** is to **design housing** for **each section of society**. Broadly these fall into the following:

- **size categories:**
single; small family/group; large family/group
- **wealth categories:**
poor; low-middle income; well-to-do; wealthy

You should **consider how to arrange** these types of houses into districts, which will **mix the various types of people** into a **well functioning community** and avoid the isolation of any part of it or the creation of 'ghettos' or 'sink estates.'

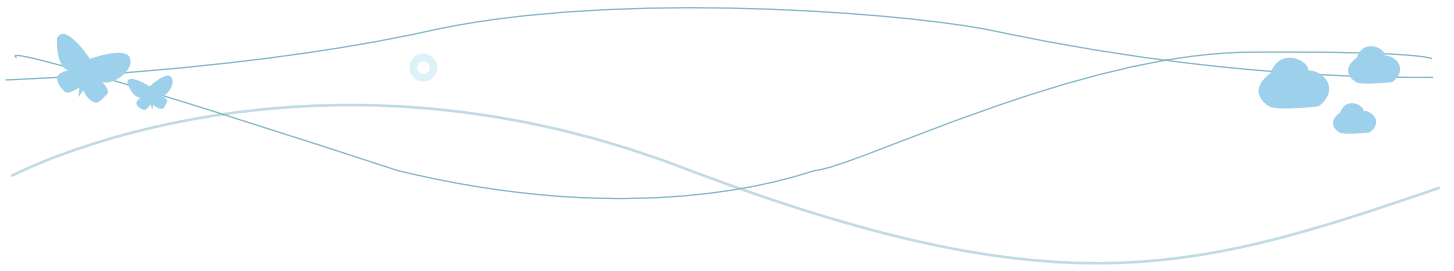
Ensure as best you can that you plan for the **most ecologically responsible housing possible**, minimising negative impacts of development on local eco-systems.

The SMG will need to hold regular meetings to ensure your efforts are co-ordinated.

It is recommended that you **refer in depth to the competition "resource pack"**. A printed copy will have been sent to your Head Teacher. Soft copies are available to download from the website.

Information regarding the judging criteria that submissions will be reviewed against can be downloaded from the Judging tab of the competition website.





CHECK LISTS

To achieve success you should consider whether you have covered the following:

✓ *Criteria Check List*

	Innovative ideas that may not exist in communities you know
	The potential negative impacts of this community development on local eco-systems and have considered ways these impacts can be minimised or eliminated altogether
	Energy should be sourced from environmentally friendly and renewable sources; you could consider the wind, solar, biomass and ground source energy generation – or any others you know of, or can discover
	A lot of new building is occurring in low-lying land liable to flooding - what sorts of things could be done to help ensure that the inhabitants of your township do not suffer from this?
	People require recreational areas at or near homes for playing, entertaining and generally 'hanging out'
	Schools and other public services for all age groups will be needed; what services, how many and where should they be sited in relation to housing?

Your final submission must be in digital and hard copy format
(see Terms and Conditions for more information) **and could include:**

✓ *Submissions Check List*

	Diagrammatic material (e.g. tables, graphs, maps, diagrams)
	Graphics (original photographs or from printed or internet non-copyright sources)
	Written text documents
	Photographs of 3D models you have constructed
	Audio or video clips
	Appropriate presentational methods not listed above

ROLE SHEET FOR THE SENIOR MANAGEMENT GROUP

Managing Director

Oversees the general operation of the whole group therefore needs to know what is happening in all areas of the group's work in general terms.

Main tasks:

- **Provides encouragement** for group members
- **Assists wherever possible**
- **Ensures** that **deadlines** are kept to
- **Assists** in **settling difficulties** between team members.

Communications Manager

Responsible for group's access to ICT and providing relevant information.

Main tasks:

- **Ensures** that **research materials** are **known** about by **all group members**
- **Ensures** that **appropriate communication between** the sub **groups** takes place
- **Assists all** other **group** members
- Takes the lead in developing the submission.

Chief Architect

Responsible for the overall design.

Main tasks:

- **Ensures** that **style** and **usefulness** **meet and match**
- **Ensures** that the **overall design** **meets** the **brief**.

Ecological Inspector

Responsible for low carbon footprint of the development.

Main tasks:

- **Protects** local **animal** and **plant life**
- **Ensures all** aspects of the **group's plans** are as **eco-friendly as possible**
- **Undertakes relevant research** and **informs** the **rest** of the **group**.

Landscape Designer

Ensures design takes account of open spaces responsibly.

Main task:

- **Ensures** that the **design incorporates open space** to meet a variety of needs.

